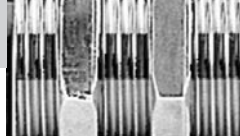


CI



## Noncontact Temperature Measurement for Industrial Applications



## CI Highlights

- Type J or K, or 0-5 V output
- Two models cover temperature ranges from 0°C to 500°C (32°F to 932°F)
- IP 65 (NEMA-4) stainless steel electronics housing
- 4:1 optics at 90% energy
- 350 mSec (95%) response time
- Powered by 12–24 VDC at 20 mA
- Accessories for cooling and air purging

The Raytek CI model provides the advantages of infrared temperature measurement in a compact, low cost, integrated sensor. Designed for easy integration into a standard 4-wire system, the CI sensor can easily replace traditional contact probes with a J-type or K-type thermocouple output, or with a 0-5 volt output if your application is susceptible to noise or requires a longer cable run.

The CI sensor is designed to measure target temperatures ranging from 0°C to 500°C (32°F to 932°F). The CI unit's onboard electronics are protected by a rugged IP 65 (NEMA-4) stainless steel housing, allowing the sensor to function in ambient temperatures to 70°C (160°F) without cooling. With water cooling, the CI sensor can withstand ambient temperatures to 260°C (500°F).

Because the CI unit has the same 50 Ohm output impedance as a thermocouple, it functions accurately—without offset errors—when used in conjunction with the thermocouple break protection circuitry in most controllers, displays, and transmitters.

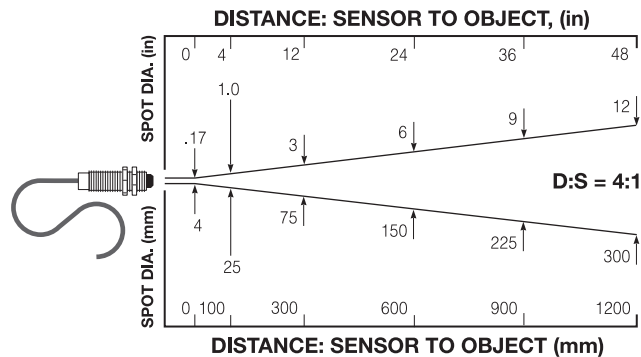
Compact. Easy to install. Affordable. The Raytek CI sensor is ideal for both OEM and end-user applications.

## Measurement Specifications

| Model | Output         | Overall Temp. Range           | Accuracy   |
|-------|----------------|-------------------------------|--|
| CI1A  | J Thermocouple | 0°C to 350°C (32°F to 662°F)  | 0°C to 115°C (32°F to 240°F) ±3°C (±6°F)                     |
| CI2A  | K Thermocouple |                               | 116°C to 225°C (241°F to 440°F) larger of ±5%                |
| CI3A  | Voltage        |                               | 226°C to 350°C (441°F to 662°F) >±5%                         |
| CI1B  | J Thermocouple | 30°C to 500°C (86°F to 932°F) | 100°C to 500°C (212°F to 932°F) larger of ±2% or ±3°C (±6°F) |
| CI2B  | K Thermocouple |                               | 30°C to 99°C (86°F to 211°F) ±6°C (±10°F)                    |
| CI3B  | Voltage        |                               |  |

|                        |   |
|------------------------|---|
| Spectral Response      | 7 to 18 microns   |
| System Repeatability   | ±1% of measured value or ±1°C (2°F), whichever is greater |
| Temperature Resolution | <0.5°C or 1°F   |
| Response Time (95%)    | 350 mSec  |
| Emissivity             | Fixed at 0.95   |

## Nominal Optical Specifications

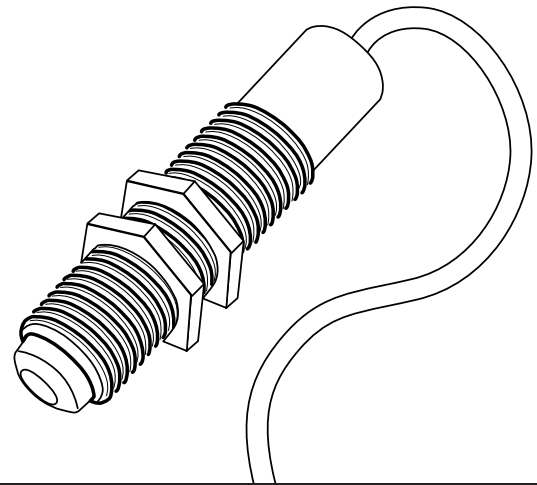


D:S is the optical resolution expressed as a ratio of the distance to the resolution spot divided by the diameter of the spot.

Optical resolution for the CI sensor is 4:1. Nominal spot size based on 90% energy.

## Electrical Specifications

|                        |  |
|------------------------|--|
| Outputs                | User-selectable thermocouple output (model specific, either J or K) or voltage output 10 mV/°C |
| Cable Length           | 1 m (3.2 ft) standard, longer cables optional  |
| Output Impedance       | 50 ohms  |
| Minimum Load Impedance | 50K ohms   |
| Power Supply           | 12–24 VDC ( $\leq 2.5\%$ ripple)<br>@ 20 mA  |



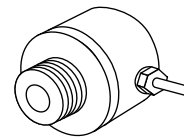
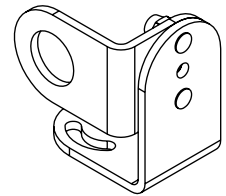
## Accessories Options

Each CI sensor includes two mounting nuts, 1m (3.2ft.) of cable, and an operator's manual. Longer cables up to 15m (50ft.) maximum are available and must be specified at the time of order.

## Sensor Specifications

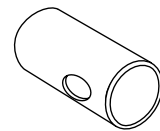
|                           |  |
|---------------------------|--|
| Environmental Rating      | IP 65 (NEMA-4)   |
| Ambient Temperature Range | 0°C to 70°C (32°F to 160°F)                              |
| With air cooling          | 0°C to 90°C (32°F to 200°F)                              |
| With water cooling        | 0°C to 260°C (32°F to 500°F)                             |
| Storage Temperature       | -30°C to 85°C (-22°F to 185°F)                           |
| Relative Humidity         | 10 to 95%, non-condensing                                |
| Shock                     | IEC 68-2-27 (MIL STD 810D)<br>50 g's, 11 mSec, any axis  |
| Vibration                 | IEC 68-2-27 (MIL STD 810D)<br>3 g's, any axis, 11–200 Hz |
| Weight                    | 130 g (4.5 oz)   |

Adjustable or fixed mounting bracket for sensing head (XXXCIADJB or XXXCIACFB)

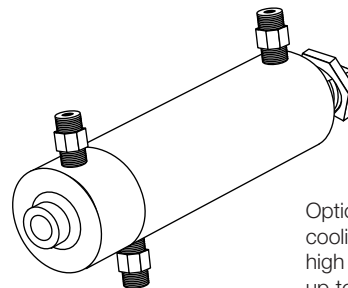
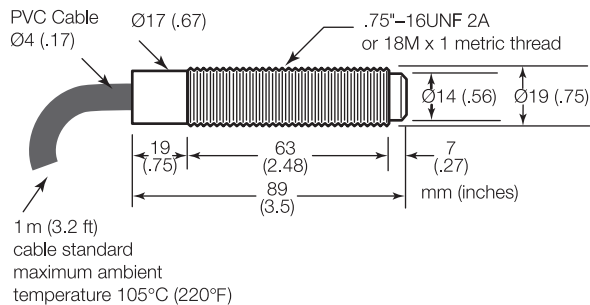


Air purge jacket to keep lens or right angle mirror clean (XXXCIAP or XXXCIACAPM for metric version)

Right angle mirror to ease installation into tight locations (XXXCIACRA)



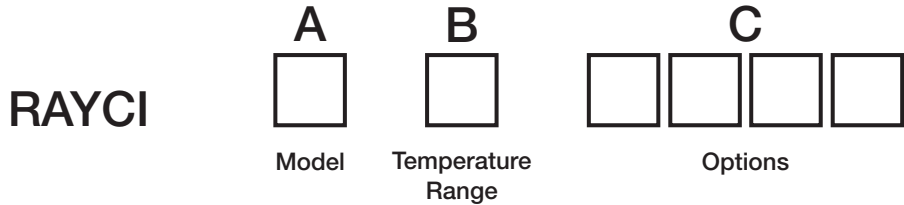
## Sensor Dimensions



Optional water/air cooling/purging system for high temperature environments up to 260°C (500°F)

Optional cooling jacket must be specified at the time of order.





| Model                | Description  |
|----------------------|--|
| RAYCI                | Raytek infrared temperature sensor   |
| Code A               | Response   |
| 1                    | Type J Thermocouple Output   |
| 2                    | Type K Thermocouple Output   |
| 3                    | Voltage Output (Linear 10 mV / °C, scaled 0-5V)                                  |
| Code B               | Temperature Range  |
| A                    | ±2% or ±3°C accuracy between 0°C and 115°C (32°F to 240°F)                       |
| B                    | ±2% or ±3°C accuracy between 100°C and 500°C (212°F to 932°F)                    |
| Code C               | Options  |
| M                    | 18Mx1 metric thread on sensor in place of standard thread                        |
| W                    | Water cooled jacket with built-in air purging and 1m (3') high temperature cable |
| Typical Model Number | <b>RAYCI1AW</b>  |

## The Worldwide Leader in Noncontact Temperature Measurement

**Raytek Corporation**  
**Worldwide Headquarters**  
 Santa Cruz, CA USA  
 Tel: 1 800 227 8074 (USA and Canada, only)  
 1 831 458 3900  
[solutions@raytek.com](mailto:solutions@raytek.com)

**European Headquarters**

|  |  |  |
|--|--|--|
| Berlin, Germany  | France   | United Kingdom   |
| Tel: 49 30 4 78 00 80                                  | Tel: 0800 888 244                                  | Tel: +44 1908 630 800                                    |
| <a href="mailto:raytek@raytek.de">raytek@raytek.de</a> | <a href="mailto:info@raytek.fr">info@raytek.fr</a> | <a href="mailto:ukinfo@raytek.com">ukinfo@raytek.com</a> |

**China Headquarters**  
 Beijing, China  
 Tel: 8610 6438 4691  
[info@raytek.com.cn](mailto:info@raytek.com.cn)

To find a Raytek office near you, please visit [www.raytek.com](http://www.raytek.com)

### Worldwide Service

Raytek offers services, including repair and calibration.  
 For more information, contact your local office or e-mail [support@raytek.com](mailto:support@raytek.com)

**www.raytek.com**



Raytek is an ISO 9001 certified company

© 2008 Raytek Corporation (3111440 Rev. F) 2/2008  
 Raytek and the Raytek logo are registered trademarks of Raytek Corporation.  
 Specifications subject to change without notice.